

A photograph of an automotive manufacturing plant. In the foreground, a car's metal chassis is being welded. Bright orange sparks are flying from the welding point, creating a dynamic and industrial atmosphere. In the background, several orange robotic arms are visible, positioned around the assembly line. The overall scene is brightly lit, highlighting the metallic surfaces and the intense light from the welding process.

ETEM AUTOMOTIVE



DEDICATED TO QUALITY, COMMITTED TO PRECISION

ETEM combining over 40 years of industrial metallurgical experience, with continuous investments in technological equipment and highly skilled people, has become a significant supplier of aluminium profiles and aluminium semi-finished and finished products for the automotive industry.

Our objective is to understand our customers' needs and their processes, and provide to them value added products that will eventually help them to achieve their goals. Benefiting from a Research and Development team with extensive experience on the automotive sector, we collaborate with our customers starting from the preliminary stage of a project.

With the objective to offer complete solutions, and a one stop shop, we have built long lasting relations over the years with our customers. R&D, extrusion, surface treatment, packaging

and transportation are indicative services **ETEM** offers to its customers. **ETEM's** continuous development on the technologies applied to our extrusion plants make it possible to deliver controlled semi-finished and finished products. In **ETEM** we have the ability to proceed with tailor made investments in machining and tolling, in order to deliver aluminium products that are specific to a project.

Automotive industry's strict norms and requirements require highly certified and standardized procedures. **ETEM**, dedicated to deliver quality products according to specification, collaborates and forms partnerships with academic Institutions and accredited laboratories throughout Europe (Institute Fur Korrosionsschutz in Dresden, NTUS- National Technical University of Athens etc) in order to test and certify our products and processes.

SERVICES WE PROVIDE

Extrusion

ETEM production plants are equipped with 5 fully modernized extrusion presses with capacity ranging from 1 500 tonnes to 3 000 tonnes and an annual capacity that exceeds 40 000 tonnes. The billets used vary from 6 to 9 in in diameters, giving the flexibility to produce a very wide range of products in dimensions and weight.

Surface treatment

ETEM offers powder coating (2 vertical lines, 2 horizontal lines) and anodizing finishes. With emphases on quality, ETEM offers a full range of colour coatings, wood imitations and different anodizing colours.

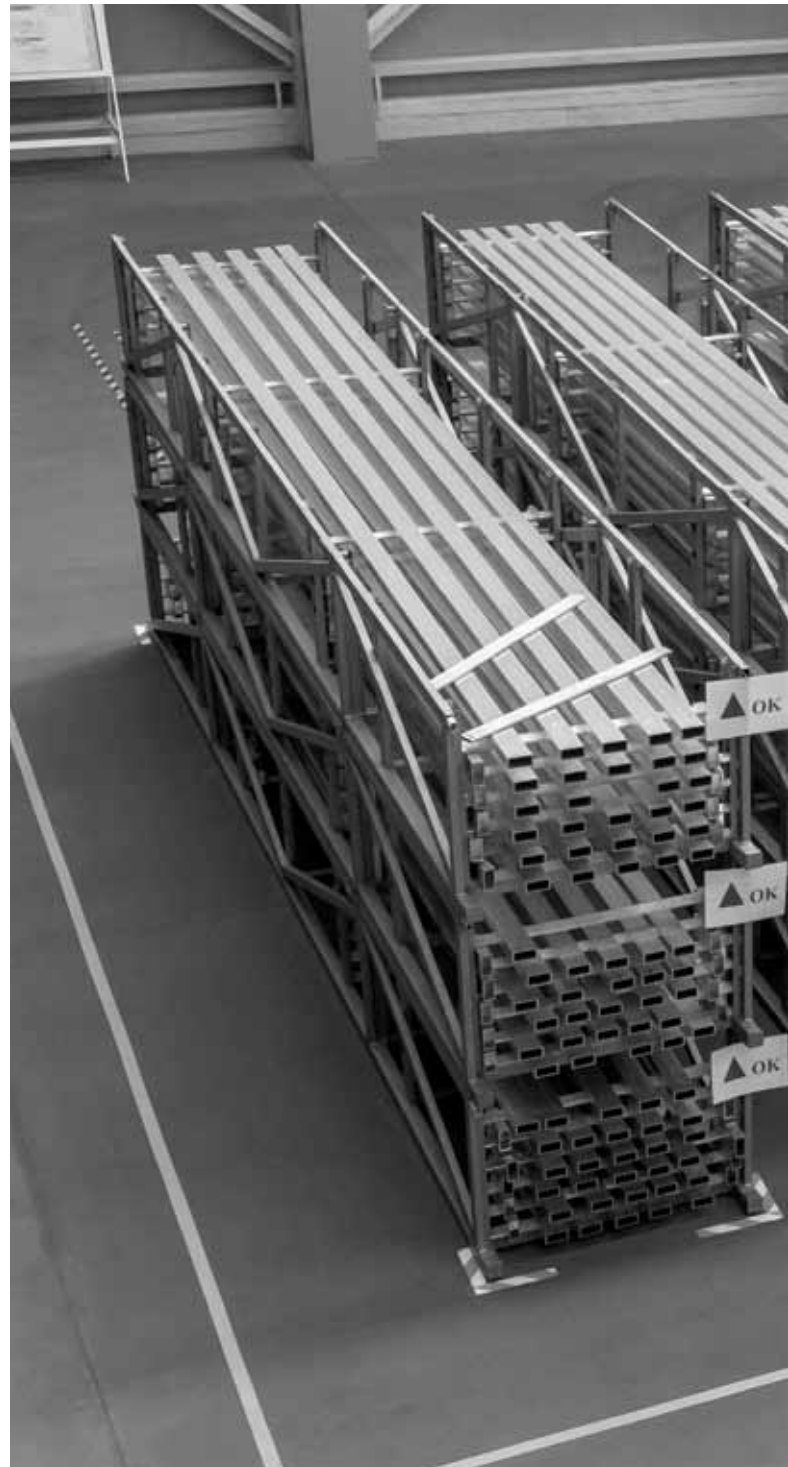
Machining – Processing

ETEM can perform a precision machining to deliver a semi-finished or finished product, ready to use.

Alloys

All profiles are produced according to the European standard EN 573-3 from the following alloys:

- EN AW – 1050 (Al 99.5)
- EN AW – 6060 (Al Mg Si)
- EN AW – 6063 (Al Mg 0.7 Si)
- EN AW – 6005 (Al Si Mg)
- EN AW – 6082 (Al Si 1 Mg Mn)





AUTOMOTIVE

CRASH MANAGEMENT PROFILES

CHASSI & SUSPENSION

COCKPIT CARRIERS

DECORATIVE PROFILES

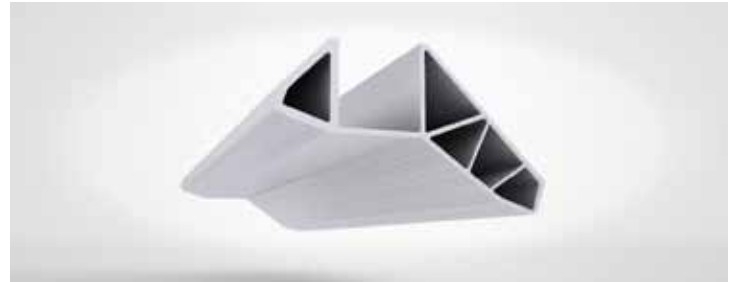
WINDOW GUIDES

ROOF RAILING SYSTEMS

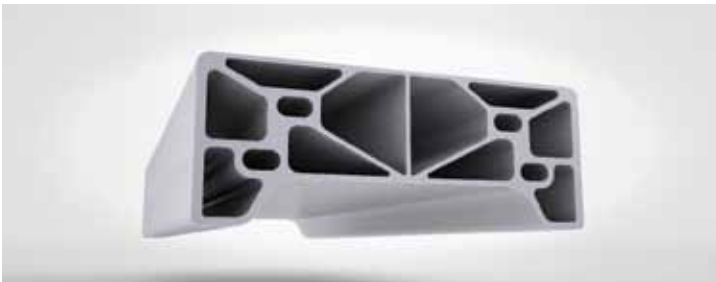
CRASH MANAGEMENT PROFILES



CHASSI & SUSPENSION



CHASSI & SUSPENSION



CHASSI & SUSPENSION



Dedicated to quality and precision, ETEM delivers aluminium products for numerous automotive applications. Profiles for Crash Management Systems (CMS), Roof Railing Systems, Decorative profiles with special finishes, Chassis and Suspension parts that require exceptional performance characteristics, Door components and many more.

Investing in human capital, technological know-how and modern equipment, ETEM can deliver a wide range of added value products and services for the automotive industry. With the ability to perform high precision machining processes, ETEM can deliver semi-finished or finished products ready for use, according to customers' needs.

ETEM is certified for the production of CRASH RELEVANT aluminium PROFILES and an accredited TIER 2 and TIER1 Automotive supplier making products directly for automotive industries and original equipment manufacturers (OEMs). Companies and projects include AUDI, BMW, DAIMLER, LAMBORGHINI, JAGUAR - LAND ROVER, PORSCHE and ROLLS ROYCE.

Crash relevant aluminium profiles and parts need to have high mechanical properties, such as static stiffness, combined with highest energy absorption capabilities. These parts need to absorb energy by controlled folding. For the automotive industry, this folding behavior is a key design criterion for mechanical process and component development.

COCKPIT CARRIERS



DECORATIVE PROFILES



WINDOW GUIDES



ROOF RAILING SYSTEMS



TRANSPORTATION

RAILWAY SEATS

TRUCK CHASSIS

TRUCK AND TRAILERS

TRUCK BODIES

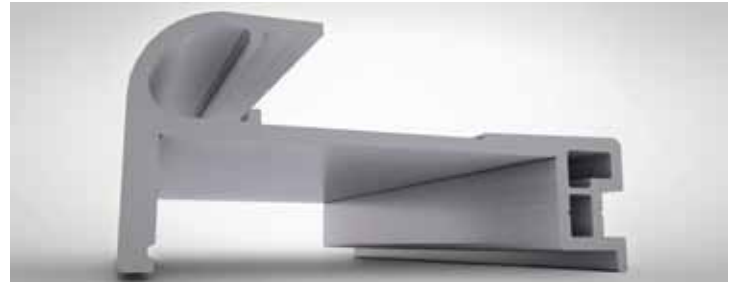
BICYCLES

MARINE

RAILWAY SEATS



TRUCK CHASSIS



TRUCK AND TRAILERS



TRUCK AND TRAILERS



Aluminium alloys used in commercial vehicles give 40-60% weight savings over competing materials, which translates to increased payload and fuel savings. Furthermore, aluminium's well-known corrosion resistance is an obvious advantage in road transport, contributing to longer life-span and reduced maintenance cost. ETEM is a supplier to well-known trailer manufacturers, and the product range includes customer designed extruded profiles in 6060, 6063, 6005A and 6082 alloys used for various types of trailer superstructures and chassis parts.

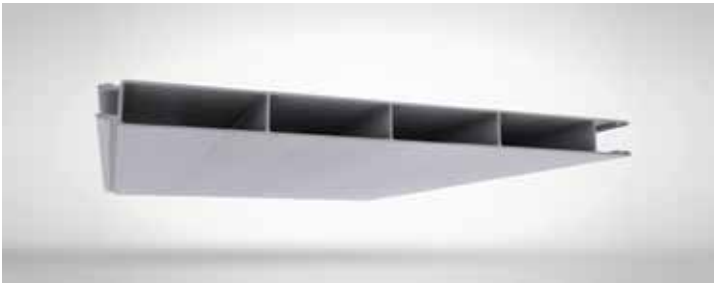
With extrusion capability to produce cut to length profiles up to 14 meters long, ETEM offers a significant advantage in this market. ETEM Group has 5 presses with varying extrusion forces with the possibility to use ingots of 7, 8 and 9 inches in diameter. These extrusion capabilities offer a cost

effective production according to the size and weight of the desired aluminium profile, an important characteristic for the transportation market.

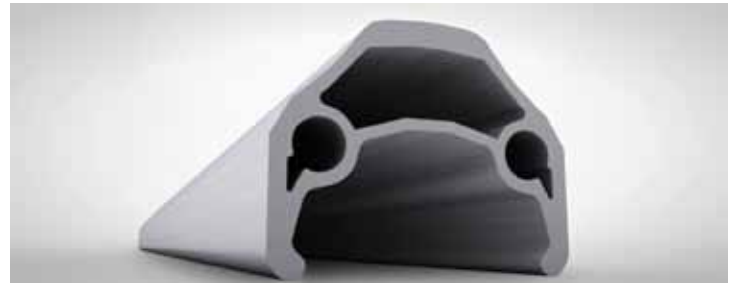
ETEM has increased its presence in Marine applications. Certified by Lloyds Register (LRS) and with the use of Alloy 6082 T6 widely used in common shipbuilding applications, ETEM offers a number of products for Marine use.

Other sectors with expertise include Rail, Bicycles with the production of aluminium profiles for the manufacturing of the frames and the rims, and Truck bodies, substructures, superstructures and trailers where the reduction of weight combined with durability to heavy loads, has widened considerably the use of aluminium the later years.

TRUCK BODIES



BICYCLES



MARINE



MARINE







etem.com